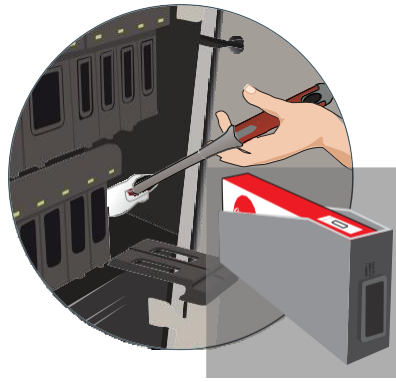


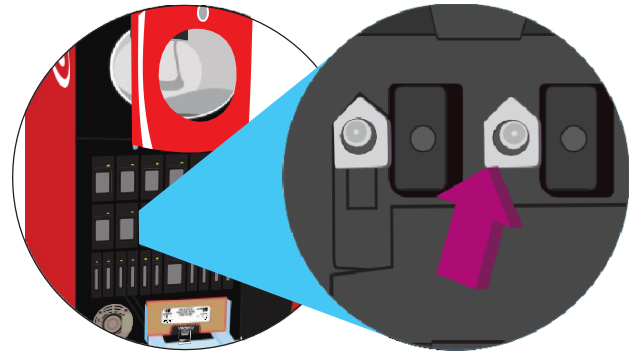
# Cleaning Best Practices

EVERY TIME AN INGREDIENT IS REPLACED

9000/8000



When replacing **ingredient cartridges**, wipe **cartridge slots** or use cartridge slot cleaning tool.



Clean **cartridge probes** until the cloth comes away clean. Repeat. Then allow to air dry for 2 minutes.

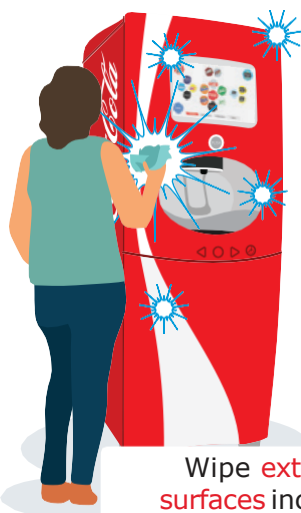
## ! IMPORTANT

Always use a clean cloth and approved sanitizer solution when cleaning your dispenser.

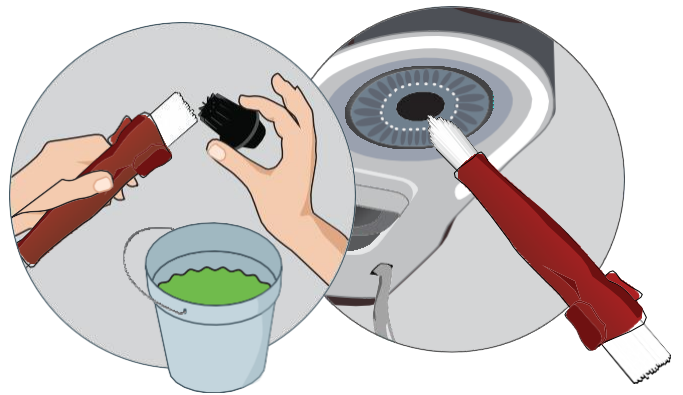


Kay-5 Sanitizer #522231

EVERYDAY

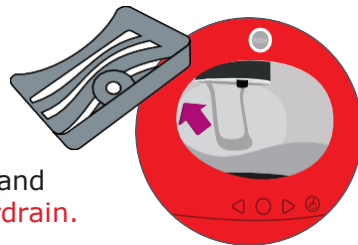


Wipe **exterior surfaces** including **backpash** and **cup rest**.



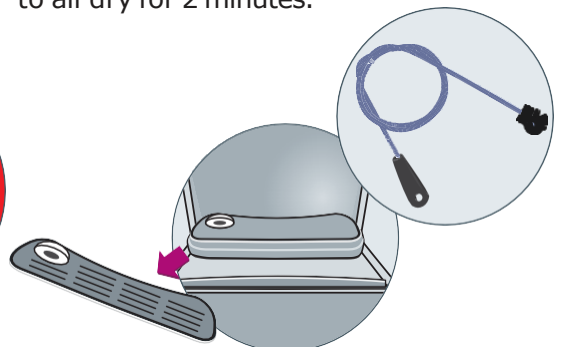
Remove nozzle and clean. **Soak nozzle in sanitizer solution** for no more than 5 minutes. **Scrub injector ring with sanitizer** and brush, then repeat. Allow to air dry for 2 minutes.

Need help or want to order small parts  
**Call myCokeTech – Phone Fix & Video Chat at 1-800-318-COKE (2653)**



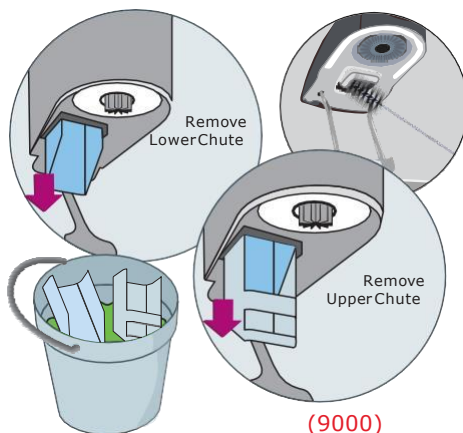
Wash **drip tray** and scrub **dispenser drain**.

(9000)



(8000)

EVERY WEEK



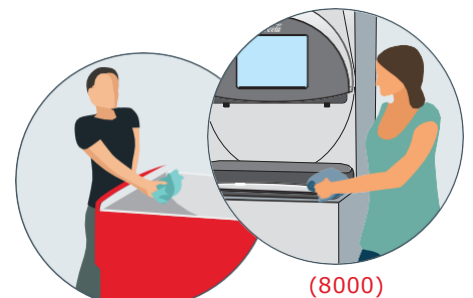
Clean, then sanitize inside the **ice chute** with food grade sanitizer.

(9000)

**Remove upper and lower ice chute inserts.** Clean, then soak in sanitizer for two minutes. Air dry then reinstall ice chute inserts.

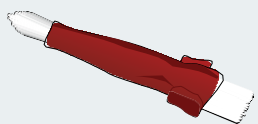
EVERY MONTH

Power off dispenser. Remove ice bin lid and thoroughly clean then sanitize the **ice bin**.



(9000)

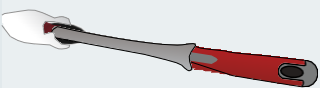
(8000)



nozzle & injector ring brush #149326

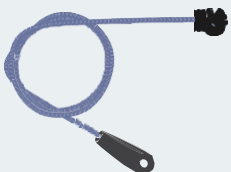


ice chute brush #28076



cartridge slot cleaning tool #149324

microfiber cartridge sleeve #149325



drain cleaning brush #144925

CREW CONNECT